

Owner:	Kvadrat Really
No.:	MD-23097-EN
Issued:	23-06-2023
Issued first time	15-06-2023
Valid to:	15-06-2028

---

3<sup>rd</sup> PARTY VERIFIED

# EPD

---

VERIFIED ENVIRONMENTAL PRODUCT DECLARATION | ISO 14025 & EN 15804



**Owner of declaration**

Kvadrat Really  
Lundbergsvej 10,  
8400 Ebeltøft  
CVR: 45998517



**Issued:**

23-06-2023

**Valid to:**

15-06-2028

**Programme**

EPD Danmark  
[www.epddanmark.dk](http://www.epddanmark.dk)



- Industry EPD
- Product EPD

**Declared product(s)**

Textile Felt

**Basis of calculation**

This EPD is developed in accordance with the European standard EN 15804+A2.

**Comparability**

EPDs of construction products may not be comparable if they do not comply with the requirements in EN 15804. EPD data may not be comparable if the datasets used are not developed in accordance with EN 15804 and if the background systems are not based on the same database.

**Validity**

This EPD has been verified in accordance with ISO 14025 and is valid for 5 years from the date of issue.

**Use**

The intended use of an EPD is to communicate scientifically based environmental information for construction products, for the purpose of assessing the environmental performance of buildings.

Number of declared datasets/product variations: [1]

**Production site**

Production site located in Thisted, Denmark

The production is powered by green electricity and biogas, which is used in A3 (production)

**EPD type**

- Cradle-to-gate with modules C1-C4 and D
- Cradle-to-gate with options, modules C1-C4 and D
- Cradle-to-grave and module D
- Cradle-to-gate
- Cradle-to-gate with options

**Product(s) use**

The Kvadrat Really Textile Felt is a sound absorbing and decorative felt consisting of end-of-life textiles mixed with a bio-based binder.

**Declared/ functional unit**

1m<sup>2</sup> of product

**Year of production site data (A3)**

2021-2023

**EPD version**

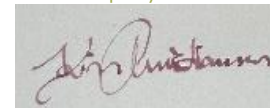
1<sup>st</sup> version. 23-06-2023. Change of product description.

CEN standard EN 15804 serves as the core PCR

Independent verification of the declaration and data, according to EN ISO 14025

- internal
- external

Third party verifier:



Kim Christiansen



Martha Katrine Sørensen  
EPD Danmark

**Life cycle stages and modules (MND = module not declared)**

Product			Construction process		Use								End of life				Beyond the system boundary
Raw material supply	Transport	Manufacturing	Transport	Installation process	Use	Maintenance	Repair	Replacement	Refurbishment	Operational energy use	Operational water use	De-construction demolition	Transport	Waste processing	Disposal	Re-use, recovery and recycling potential	
A1	A2	A3	A4	A5	B1	B2	B3	B4	B5	B6	B7	C1	C2	C3	C4	D	
<b>X</b>	<b>X</b>	<b>X</b>	MND	MND	<b>X</b>	<b>X</b>	<b>X</b>	<b>X</b>	<b>X</b>	<b>X</b>	<b>X</b>	<b>X</b>	<b>X</b>	<b>X</b>	<b>X</b>	<b>X</b>	

## Product information

### Product description

Textile Felt is an innovative acoustic material. Ideal for ceilings and wall installations.

Textile Felt expresses hints of the many recycled textiles used in its creation process. A rich scale of fabric fibers and tones emerges from its subtly structured surface.

The recycled post-production input material used to craft Textile Felt includes waste from Kvadrat's own production, combined with a bio-based binder fibre.

The main product components are shown in the table below.

Material	Weight-% of declared product
Textile fibers	72.9 %
Polyethylen	17.6 %
Polypropylen	9.5 %

### Product packaging

The composition of the sales- and transport packaging of the product is shown in the table below.

Material	Weight-% of packaging
Europallet	93 %
Foil	6,7 %
Cardboard	0,3 %

### Representativity

This declaration, including data collection and the modeled foreground system including results, represents the production of 1 m<sup>2</sup> product on the production site located in Thisted, Denmark. Product specific data (energy and material input) are based on average values collected in the period 2021-2023.

Background data are based on specific collected data from own production and supplier information, supplemented with dataset from Ecoinvent 3.8. Generally, the used generic background datasets are of high quality and less than 10 years old. The data were assessed bases on their quality and representativeness.

### Hazardous substances

Textile Felt does not contain substances listed on the "Candidate List of Substances of Very High Concern for authorisation"

(<http://echa.europa.eu/candidate-list-table>)

### Essential characteristics

Further technical information can be obtained by contacting the manufacturer or on the manufacturer's website:

<https://www.kvadrat.dk/en/really>

### Reference Service Life (RSL)

No reference service life (RSL) is declared since the scope of this EPD is cradle-to-gate with modules C1-C4 and D, with the addition of module B1 as the only relevant part of the use phase (B1-B7). The product emits substances during its lifetime, which has been tested and accounted for in the background data.

Picture of product(s)



# LCA background

## Declared unit

The LCI and LCIA results in this EPD relates to 1 m<sup>2</sup> of the product.

Name	Value	Unit
Declared unit	1	[m <sup>2</sup> ]
Density	100	kg/m <sup>3</sup>
Conversion factor to 1 kg.	0,01	-

## Functional unit

The production of 1 m<sup>2</sup> of Textile Felt

## PCR

This EPD is developed according to the core rules for the product category type 3 of construction products in EN15804:2012+A2:2019, which serves as core PCR.

## Guarantee of Origin – certificates

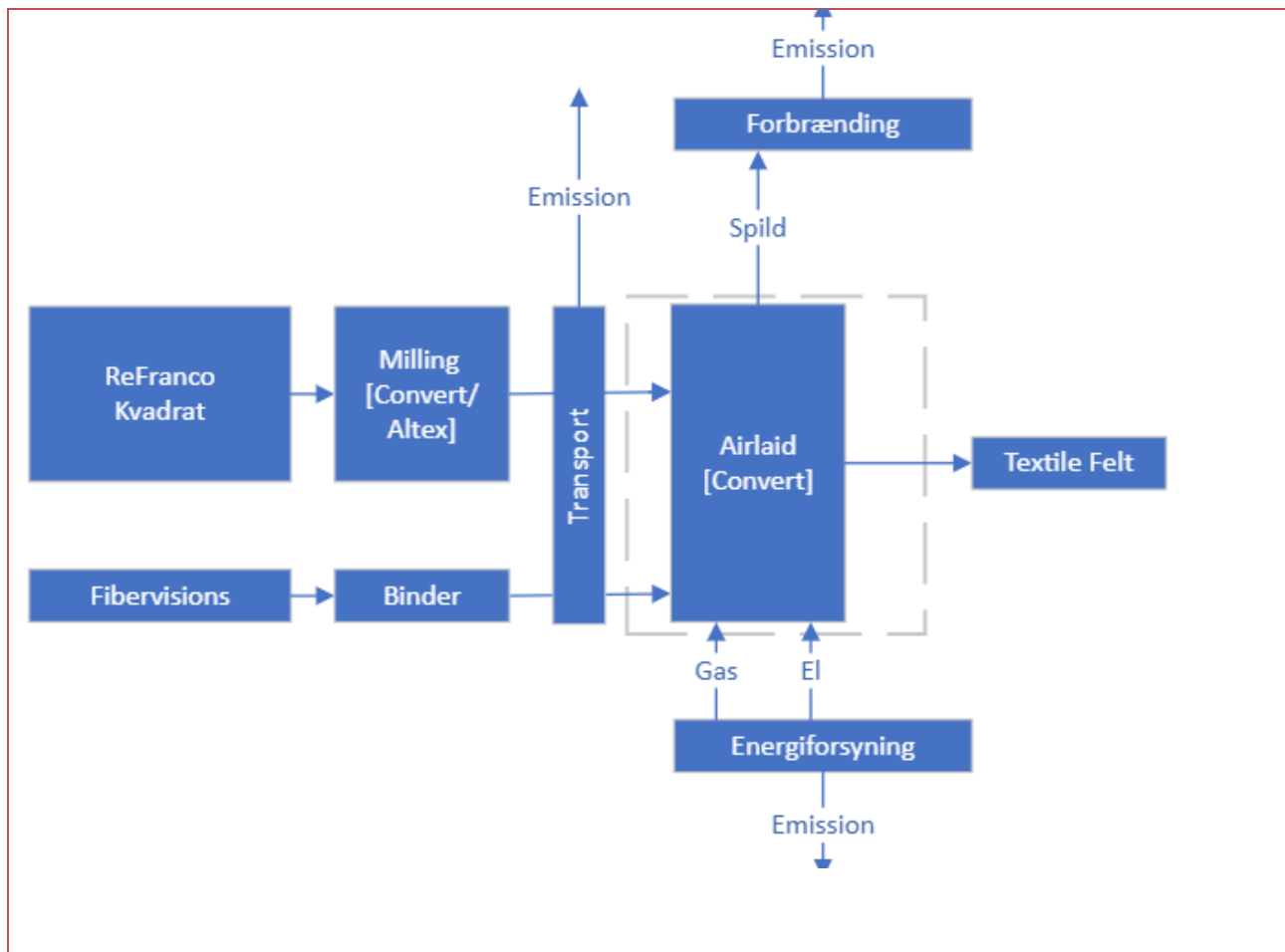
Foreground system:

The declared products are produced using certified green energy and biogas in the production site in Thisted, Denmark, covering A3.

Background system:

The database, ecoinvent 3.8. (Published in 09-2021) is utilized for the background system. As a result, both upstream- and downstream activities are based on average supply mixes for the specific country or region depending on the given dataset.

## Flowdiagram



## System boundary

This EPD is cradle-to-gate with options, modules C1-C4 and module 4 and covers the life cycle sub modules A1-A3, B1, C1-4 and D, in which 100% weight-% has been accounted for.

The general rules for the exclusion of inputs and outputs follows the requirements in EN 15804, 6.3.5, where the total of neglected input flows per module shall be a maximum of 5 % of energy usage and mass and 1 % of energy usage and mass for unit processes.

### Product stage (A1-A3) includes:

A1 – Extraction and processing of raw materials

A2 – Transport to the production site

A3 – Manufacturing processes

The production stage comprises the acquisition of raw materials, products and energy, transport to the production site and the energy use of the production.

The acquisition of fiber comes from waste streams and is not accounted for in this LCA. The waste is delivered from Danish industrial laundries, European recyclers and processed in Denmark.

The acquisition of raw materials as well as the energy use in the production of the binder is included. The binder is delivered to the production site in Thisted, Denmark and transport is accounted for.

The production site mixes the fiber and binder in an airlaid process, where mats are formed under heat and pressure.

### Use stage (B1-B7) includes:

Maintenance, repair, replacement, and refurbishment (B2-B5):

The installed products are not intended to need repair, nor maintenance, replacement, or refurbishment over the lifetime of the product. Therefore, the impacts of these modules are assumed to be zero.

Operational energy and water use (B6-B7):

There is no energy use or water use involved in the operation of the products i.e., zero.

Use(B1):

During the products lifetime, different emissions occur to the indoor environment. These emissions are included as additional information.

### End of Life (C1-C4) includes:

The end-of-life processes: C1-C4 involves the handling of the products at the end-of-life stage from the end-customer. The end-customer disassembles the product and place it in the residual waste bin. Thereafter, it is handled by the municipal waste system, where it is assumed to be incinerated with heat recovery. The energy recovery will be stated as a benefit to the product life cycle since it will substitute primary energy production.

### Re-use, recovery and recycling potential (D) includes:

It is Kvadrat Really's ambition to implement a well-functioning take-back system, so the products can be remanufacturing and undergo an additional life cycle. Since the analyzed products is still new to the market and have not reached the end-of-life phase yet, the tested remanufacturing and take back scheme is not implemented in scale. Therefore, the end-of-life phase is assessed following a conservative approach.

## LCA results

### Core environmental impact indicators

ENVIRONMENTAL IMPACTS PER M <sup>2</sup> TF										
Indicator	Unit	A1	A2	A3	B1	C1	C2	C3	C4	D
GWP-total	kg CO <sub>2</sub> eq.	2,28E-01	9,63E-02	9,83E-02	0,00E+00	0,00E+00	8,16E-03	1,28E+00	0,00E+00	-1,98E-01
GWP-fossil	kg CO <sub>2</sub> eq.	2,01E-01	9,60E-02	3,30E-02	0,00E+00	0,00E+00	8,14E-03	5,15E-01	0,00E+00	-1,72E-01
GWP-biogenic	kg CO <sub>2</sub> eq.	2,71E-02	1,71E-04	6,53E-02	0,00E+00	0,00E+00	1,45E-05	7,65E-01	0,00E+00	-2,64E-02
GWP-luluc	kg CO <sub>2</sub> eq.	2,55E-04	3,84E-05	-3,78E-06	0,00E+00	0,00E+00	3,26E-06	1,49E-05	0,00E+00	-2,22E-04
ODP	kg CFC 11 eq.	5,18E-09	2,23E-08	2,03E-10	0,00E+00	0,00E+00	1,89E-09	6,11E-09	0,00E+00	-6,68E-09
AP	mol H <sup>+</sup> eq.	4,84E-04	2,73E-04	3,16E-04	0,00E+00	0,00E+00	2,31E-05	3,48E-04	0,00E+00	-4,28E-04
EP-freshwater	kg P eq.	2,83E-04	6,34E-06	1,75E-05	0,00E+00	0,00E+00	5,37E-07	3,96E-05	0,00E+00	-8,18E-05
EP-marine	kg N eq.	1,44E-04	5,55E-05	6,44E-05	0,00E+00	0,00E+00	4,71E-06	2,15E-04	0,00E+00	-1,10E-04
EP-terrestrial	mol N eq.	1,03E-03	6,04E-04	6,59E-04	0,00E+00	0,00E+00	5,12E-05	1,54E-03	0,00E+00	-1,21E-03
POCP	kg NMVOC eq.	2,54E-04	2,26E-04	1,76E-04	5,50E-07	0,00E+00	1,91E-05	3,95E-04	0,00E+00	-2,78E-04
ADPm <sup>1</sup>	kg Sb eq.	1,60E-06	3,27E-07	1,49E-06	0,00E+00	0,00E+00	2,77E-08	1,45E-07	0,00E+00	-4,42E-07
ADPF <sup>1</sup>	MJ	2,34E+00	1,11E-01	2,16E-01	0,00E+00	0,00E+00	9,41E-03	7,99E-02	0,00E+00	-1,32E+00
WDP <sup>1</sup>	m <sup>3</sup> world eq. deprived	5,11E-02	7,08E-03	2,82E-03	0,00E+00	0,00E+00	6,00E-04	4,92E-02	0,00E+00	-1,80E-01
Caption	<p>GWP-total = Global Warming Potential - total; GWP-fossil = Global Warming Potential - fossil fuels; GWP-biogenic = Global Warming Potential - biogenic; GWP-luluc = Global Warming Potential - land use and land use change; ODP = Ozone Depletion; AP = Acidification;</p> <p>EP-freshwater = Eutrophication – aquatic freshwater; EP-marine = Eutrophication – aquatic marine; EP-terrestrial = Eutrophication – terrestrial; POCP = Photochemical zone formation; ADPm = Abiotic Depletion Potential – minerals and metals; ADPF = Abiotic Depletion Potential – fossil fuels; WDP = water use</p>									
Disclaimer	<sup>1</sup> The results of this environmental indicator shall be used with care as the uncertainties on these results are high or as there is limited experienced with the indicator.									

## Additional environmental impact indicators

ADDITIONAL ENVIRONMENTAL IMPACTS PER M <sup>2</sup> TF										
Parameter	Unit	A1	A2	A3	B1	C1	C2	C3	C4	D
PM	[Disease incidence]	1,98E-09	6,08E-09	9,63E-09	0,00E+00	0,00E+00	4,13E-03	2,93E-02	0,00E+00	-1,11E-02
IRP <sup>2</sup>	[kBq U235 eq.]	3,44E-02	7,50E-03	1,55E-02	0,00E+00	0,00E+00	2,63E-12	1,12E-10	0,00E+00	-4,37E-11
ETP-fw <sup>1</sup>	[CTUe]	2,31E-02	4,87E-02	9,46E-02	0,00E+00	0,00E+00	1,53E-10	2,39E-08	0,00E+00	-6,26E-09
HTP-c <sup>1</sup>	[CTUh]	6,34E-11	3,10E-11	4,94E-10	0,00E+00	0,00E+00	6,36E-04	1,98E-03	0,00E+00	-2,73E-02
HTP-nc <sup>1</sup>	[CTUh]	1,03E-08	1,81E-09	9,11E-09	0,00E+00	0,00E+00	1,05E-01	3,83E-01	0,00E+00	-1,45E-01
SQP <sup>1</sup>	-	1,68E-01	1,24E+00	5,02E-01	0,00E+00	0,00E+00	5,15E-10	3,50E-09	0,00E+00	-2,30E-09
Caption	PM = Particulate Matter emissions; IRP = Ionizing radiation – human health; ETP-fw = Eco toxicity – freshwater; HTP-c = Human toxicity – cancer effects; HTP-nc = Human toxicity – non cancer effects; SQP = Soil Quality									
Disclaimers	<sup>1</sup> The results of this environmental indicator shall be used with care as the uncertainties on these results are high or as there is limited experienced with the indicator. <sup>2</sup> This impact category deals mainly with the eventual impact of low dose ionizing radiation on human health of the nuclear fuel cycle. It does not consider effects due to possible nuclear accidents, occupational exposure nor due to radioactive waste disposal in underground facilities. Potential ionizing radiation from the soil, from radon and from some construction materials is also not measured by this indicator.									

## Parameters describing resource use

RESOURCE USE PER M <sup>2</sup> TF										
Parameter	Unit	A1	A2	A3	B1	C1	C2	C3	C4	D
PERE	[MJ]	5,33E-01	1,57E-02	7,88E-01	0,00E+00	0,00E+00	1,33E-03	9,27E-03	0,00E+00	-8,56E-01
PERM	[MJ]	4,24E-02	5,14E-03	6,25E-02	0,00E+00	0,00E+00	4,35E-04	3,26E-03	0,00E+00	-4,16E-01
PERT	[MJ]	5,75E-01	2,08E-02	8,51E-01	0,00E+00	0,00E+00	1,76E-03	1,25E-02	0,00E+00	-1,27E+00
PENRE	[MJ]	3,01E+00	1,42E-01	2,77E-01	0,00E+00	0,00E+00	1,20E-02	9,55E-02	0,00E+00	-1,71E+00
PENRM	[MJ]	4,28E-01	1,32E+00	3,39E-01	0,00E+00	0,00E+00	1,12E-01	4,09E-01	0,00E+00	-1,61E+00
PENRT	[MJ]	3,44E+00	1,47E+00	6,16E-01	0,00E+00	0,00E+00	1,24E-01	5,04E-01	0,00E+00	-3,33E+00
SM	[kg]	1,30E-01	1,49E-03	9,63E-02	0,00E+00	0,00E+00	1,26E-04	2,04E-03	0,00E+00	-4,50E-02
RSF	[MJ]	7,64E-02	4,45E-04	3,41E+00	0,00E+00	0,00E+00	3,77E-05	2,32E-04	0,00E+00	-2,59E-02
NRSF	[MJ]	4,32E-03	1,81E-03	7,46E-04	0,00E+00	0,00E+00	1,53E-04	5,58E-04	0,00E+00	-4,48E-03
FW	[m <sup>3</sup> ]	1,20E-03	1,69E-04	7,44E-05	0,00E+00	0,00E+00	1,43E-05	1,15E-03	0,00E+00	-4,21E-03
Caption	PERE = Use of renewable primary energy excluding renewable primary energy resources used as raw materials; PERM = Use of renewable primary energy resources used as raw materials; PERT = Total use of renewable primary energy resources; PENRE = Use of non renewable primary energy excluding non renewable primary energy resources used as raw materials; PENRM = Use of non renewable primary energy resources used as raw materials; PENRT = Total use of non renewable primary energy resources; SM = Use of secondary material; RSF = Use of renewable secondary fuels; NRSF = Use of non renewable secondary fuels; FW = Net use of fresh water									



## End-of-life (waste categories and output flows)

WASTE CATEGORIES AND OUTPUT FLOWS PER M <sup>2</sup> TF										
Parameter	Unit	A1	A2	A3	B1	C1	C2	C3	C4	D
HWD	[kg]	1,38E+00	3,27E-02	8,67E-02	0,00E+00	0,00E+00	2,77E-03	4,39E-02	0,00E+00	-4,00E-01
NHWD	[kg]	4,16E-02	7,56E-02	9,81E-02	0,00E+00	0,00E+00	6,41E-03	1,01E+00	0,00E+00	-9,37E-03
RWD	[kg]	4,19E-04	2,92E-05	3,79E-05	0,00E+00	0,00E+00	2,48E-06	1,15E-05	0,00E+00	-2,47E-04
CRU	[kg]	0,00E+00	0,00E+00	0,00E+00	0,00E+00	0,00E+00	0,00E+00	0,00E+00	0,00E+00	0,00E+00
MFR	[kg]	1,27E-01	1,24E-03	9,36E-02	0,00E+00	0,00E+00	1,05E-04	1,15E-02	0,00E+00	-4,30E-02
MER	[kg]	2,67E-04	3,41E-04	4,45E-04	0,00E+00	0,00E+00	2,89E-05	3,29E-04	0,00E+00	-2,97E-04
EEE	[MJ]	0,00E+00	0,00E+00	0,00E+00	0,00E+00	0,00E+00	0,00E+00	0,00E+00	0,00E+00	0,00E+00
EET	[MJ]	0,00E+00	0,00E+00	0,00E+00	0,00E+00	0,00E+00	0,00E+00	0,00E+00	0,00E+00	0,00E+00
Caption	HWD = Hazardous waste disposed; NHWD = Non hazardous waste disposed; RWD = Radioactive waste disposed; CRU = Components for re-use; MFR = Materials for recycling; MER = Materials for energy recovery; EEE = Eksporteret elektrisk energi; EET = Eksporteret termisk energi									

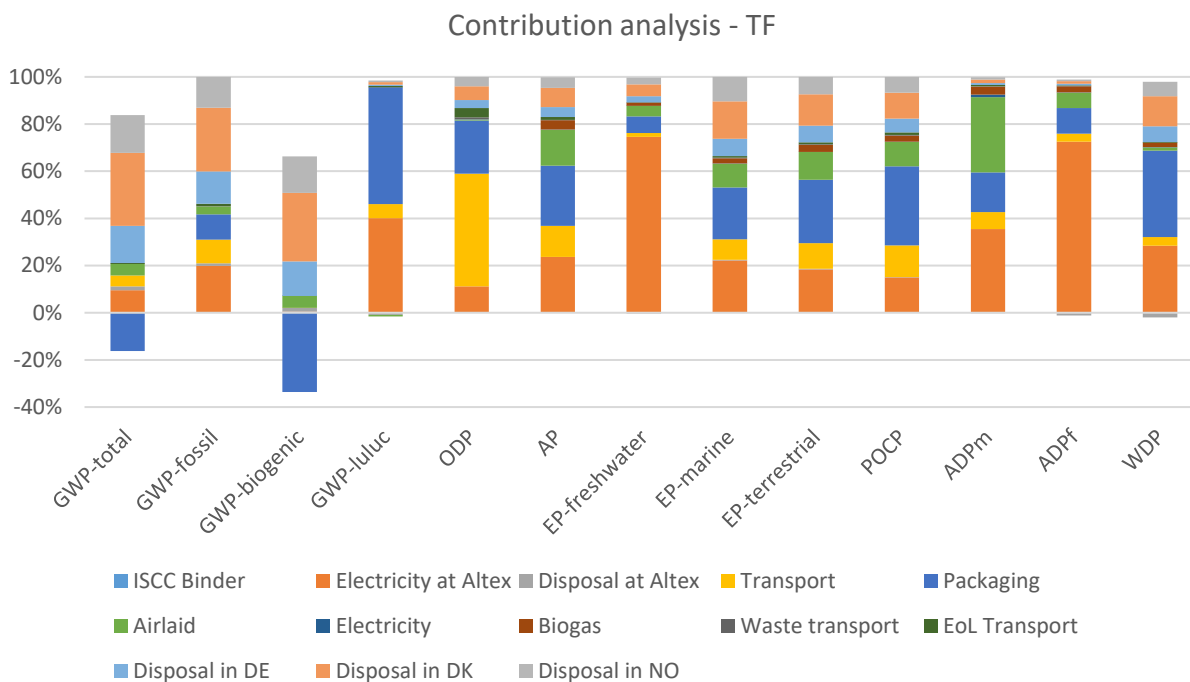
## Biogenic carbon content at factory gate

BIOGENIC CARBON CONTENT TABLETOP/TABLETOP+ PER M <sup>2</sup>		
Parameter	Unit	At the factory gate
Biogenic carbon content in product	[kg C]	0
Biogenic carbon content in accompanying packaging	[kg C]	0.0001
Note	1 kg biogenic carbon is equivalent to 44/12 kg of CO <sub>2</sub>	

## Additional information

### LCA interpretation

The following figure displays a contribution analysis for Textile Felt. The different colors represent distinctive life cycle processes and the size of certain color in a bar expresses the impact on the environmental impact category from that process. The figures are 100 % stacked diagram and does not reveal the size of impact on each environmental impact category, but only the percentage of which each process is responsible for the impact.



### Technical information on scenarios

#### End of life (C1-C4)

Scenario information	Value	Unit
Collected separately	100	%
Collected with mixed waste	0	%
For reuse	0	%
For recycling	0	%
For energy recovery	0	%
For final disposal	0	%
Assumptions for scenario development	N/A	As appropriate

#### Re-use, recovery and recycling potential (D)

Scenario information/Materiel	Value	Unit
Displaced electricity, modelled as the Danish electrical grid.	-1.39 MJ	Per kg
Displaced heating energy, modelled as natural gas.	-2.85 MJ	Per kg

---

## Indoor air

*The EPD does not give information on release of dangerous substances to indoor air because the horizontal standards on the relevant measurements are not available.*


Relevant information on material emissions is available on <https://www.kvadrat.dk/en/really>

Supporting documentation is available on request.

## Soil and water

*The EPD does not give information on release of dangerous substances to soil and water because the horizontal standards on the relevant measurements are not available. Read more in EN15804+A1 chapter 7.4.2.*

## References

<b>Publisher</b>	 epddanmark <a href="http://www.epddanmark.dk">www.epddanmark.dk</a> <small>Template version 2022.2</small>
<b>Programme operator</b>	Danish Technological Institute Buildings & Environment Gregersensvej DK-2630 Taastrup <a href="http://www.teknologisk.dk">www.teknologisk.dk</a>
<b>LCA-practitioner</b>	<i>The LCA has been conducted by an internal LCA practitioner, Oskar Lasse Lilleøre, Troels Theilby and supported by external LCA practitioner Tomas Sander Poulsen, and Matias Lund Pedersen, Provice.</i>
<b>LCA software / background data</b>	<i>The LCA has been in continuous development since June 2021 and was completed and verified during the spring of 2023. All energy data is calculated from Ecoinvent 3.8 and OpenLCA 1.11.0.</i>
<b>3<sup>rd</sup> party verifier</b>	Kim Christiansen

### General programme instructions

General Programme Instructions, version 2.0, spring 2020  
[www.epddanmark.dk](http://www.epddanmark.dk)

### EN 15804

DS/EN 15804 + A2:2019 - "Sustainability of construction works – Environmental product declarations – Core rules for the product category of construction products"

### EN 15942

DS/EN 15942:2011 – " Sustainability of construction works – Environmental product declarations – Communication format business-to-business"

### ISO 14025

DS/EN ISO 14025:2010 – " Environmental labels and declarations – Type III environmental declarations – Principles and procedures"

### ISO 14040

DS/EN ISO 14040:2008 – " Environmental management – Life cycle assessment – Principles and framework"

### ISO 14044

DS/EN ISO 14044:2008 – " Environmental management – Life cycle assessment – Requirements and guidelines"